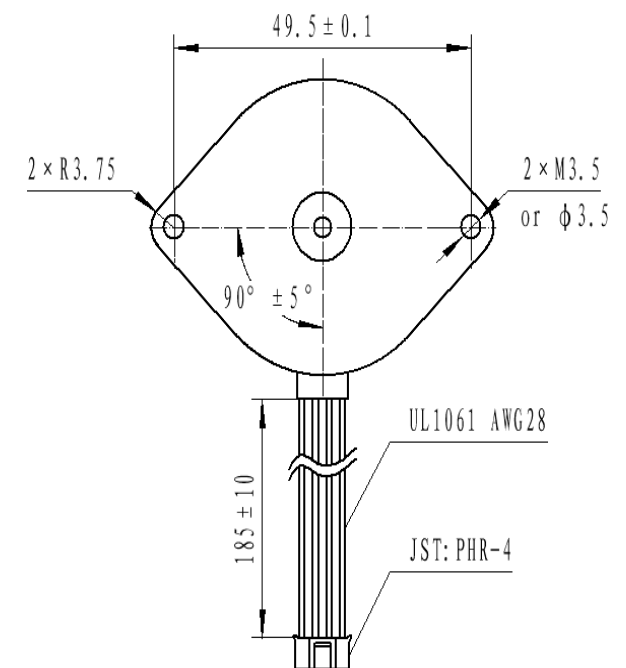
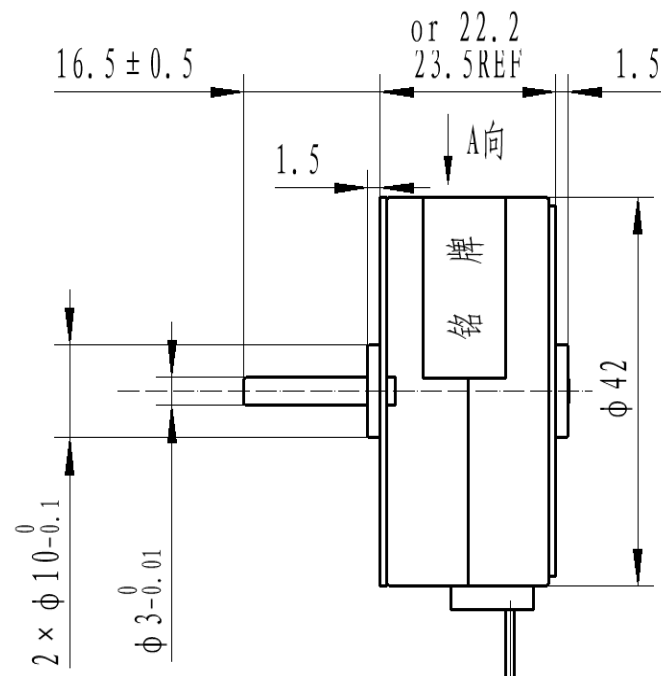


Type	ELPM4224-01	ELPM4224-02
Voltage	24 VDC	24 VDC
Resistance/phase at 25 °C	7Ω ±10%	100Ω ±10%
Step angle (2-2 exciting)	7.5	7.5
Phase	2	2
Exciting	2-2	2-2
Detent torque (No excitation)	150 gf.cm	160 gf.cm
Pull in torque (200pps)	300 gf.cm	250 gf.cm
Holding torque	1100 gf.cm	1000 gf.cm
No load pull in frequency	780 PPS	400 PPS
No load pull out frequency	1100 PPS	420 PPS
Insulation resistance (DC 500V)	≥100 MΩ	≥100 MΩ
Working temperature	-10 to 50°C	-10 to 50°C
Dielectric strength (600VAC, 1mA, 1s)	No breakdown No flashover	No breakdown No flashover



Rev	Modify details	Modified by/date
A		

Project No.:	Part No.:	Material	REV
	ELPM4224		A
Description:	Weight	Design:	Scale
PM Motor			
ELMEQ <a href="http://www.elmeq.com">www.elmeq.com</a>	Approve:		



Tish drawing and its contents are the property of ELMEQ and must not be copied, reproduced, transmitted or disclosed to any third party without written consent of ELMEQ.