

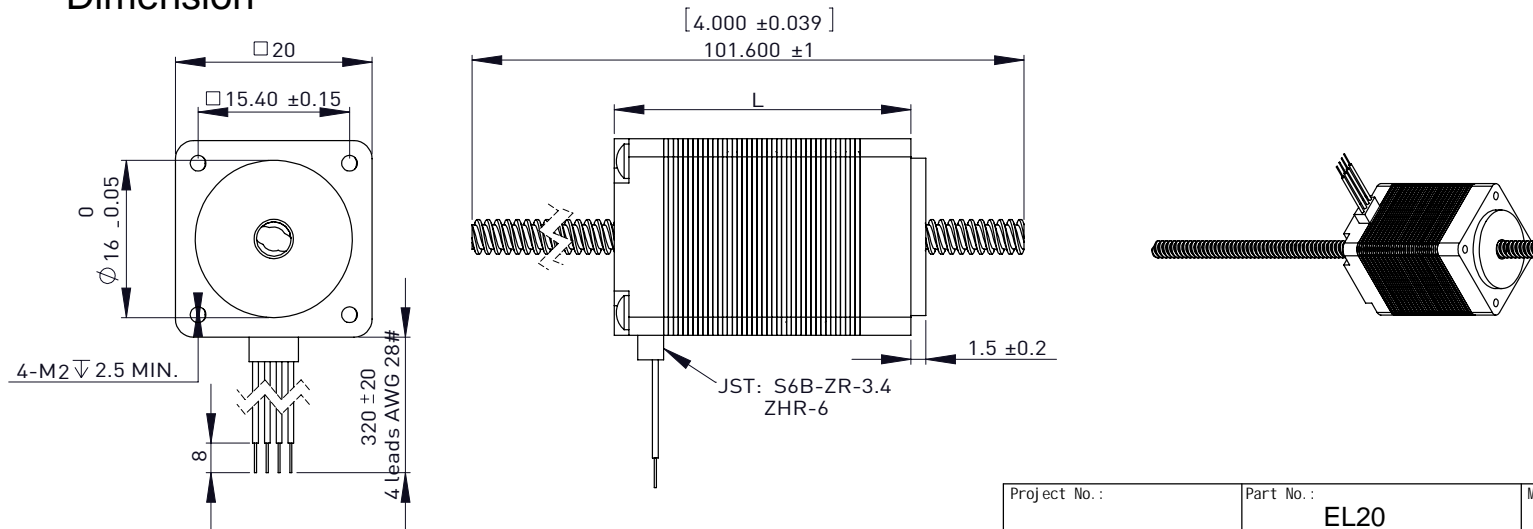
## Motor Characteristics

Motor Type	Voltage (V)	Current (A)	Resistance ( )	Inductance (mH)	Lead Wire No.	Motor Length (mm)
EL20-2030	2.5	0.5	5.0	1.2	4	30
EL20-2040	4.4	0.5	8.8	2.7	4	40


## Available Lead Screws and Travel per Step

Screw Dia. (inch)	Screw Dia. (mm)	Lead (inch)	Lead (mm)	Lead Code	Travel Per Step (mm)
0.138	3.5052	0.024	0.6096	AA	0.003
0.138	3.5052	0.048	1.2192	B	0.0061
0.138	3.5052	0.079	2.0	G	0.01
0.138	3.5052	0.158	4.0	M	0.02
0.138	3.5052	0.315	8.0	T	0.04

## Dimension



Available travel per step:  
0.0030 mm, 0.006 mm, 0.01 mm, 0.02 mm, 0.04 mm

Project No.:	Part No.:	Material	REV
	EL20		Scale
Description:		Design:	
Hybrid Stepper Motor Linear Actuators			
 <a href="http://www.elmeq.com">www.elmeq.com</a>		Approve:	

This drawing and its contents are the property of ELMEQ and must not be copied, reproduced, transmitted or disclosed to any third party without written consent of ELMEQ