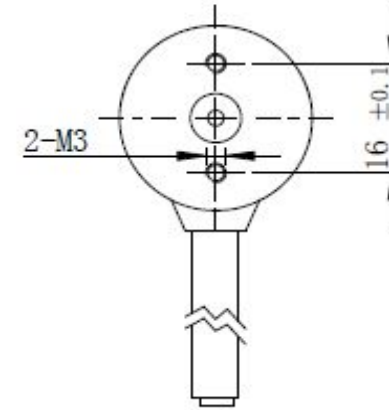
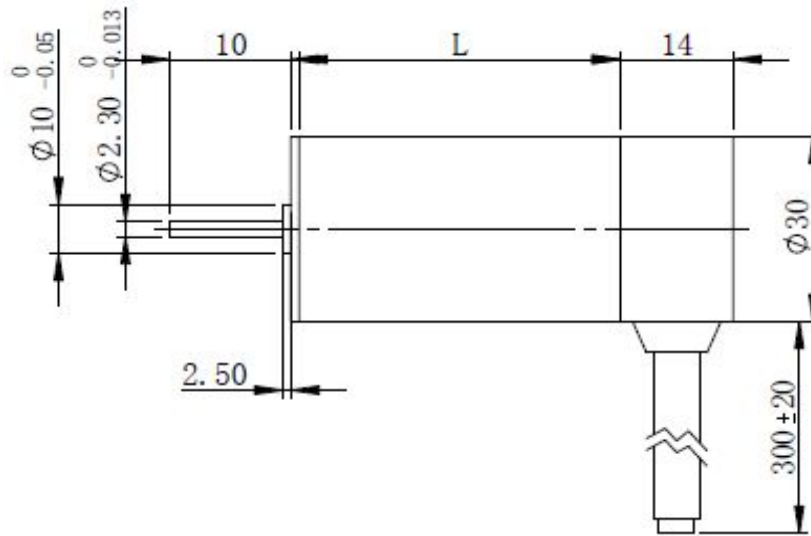


Rev	Modify details	Modified by/date



Specification:

Model		EL30RBL 41	EL30RBL 56
Number of phase		3	
Rated voltage	VDC	24	12
Rated speed	RPM	5000	1500
Rated torque	mN.m	12	26
Rotor power	W	6	4
Body length	mm	41	56
Weight	Kg	0.08	0.1

General specification:

Item	Specifications
Winding type	Star/Delta
Hall effect angle	120 degree electrical angle
Shaft run out	0.025mm
Radial play	0.06mm@450g
End play	0.08mm@450g
Max. radial force	15N@10mm from the flange
Max. axial force	10N
Insulation class	Class B
Dielectric strength	500VAC for one minute
Insulation resistance	100MΩMin.500VDC

Project No.:	Part No.:	Material	REV
	EL30RBL DC		A
Description:		Weight	Scale
DC Brushless Motor		Design:	
ELMEQ www.elmeq.com		Approve:	



This drawing and its contents are the property of ELMEQ and must not be copied, reproduced, transmitted or disclosed to any third party without written consent of ELMEQ