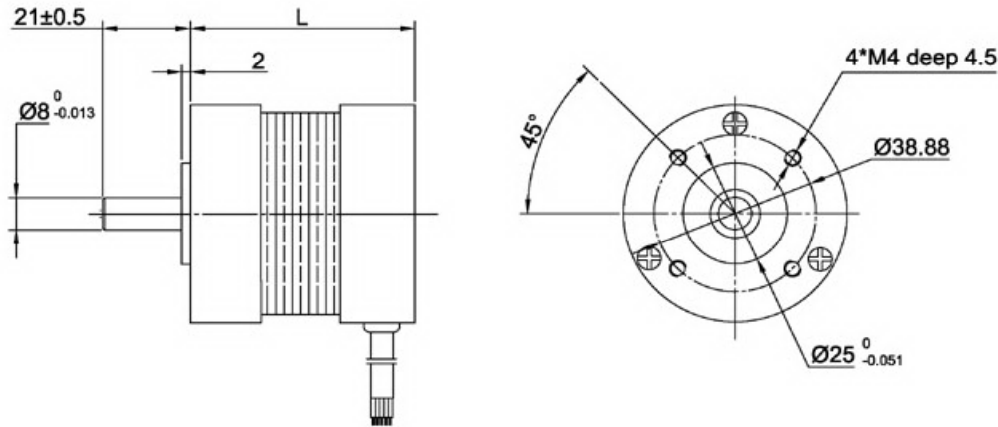


Rev	Modify details	Modified by/date




**Specification:**

Model		EL57RBL 54-01	EL57RBL 54-02	EL57RBL 54-03	EL57RBL 74-01	EL57RBL 74-02	EL57RBL 74-03	EL57RBL 94-01	EL57RBL 94-02
Number of poles		4							
Number of		3							
Rated voltage	VDC	24	24	24	24	24	24	24	24
Rated speed	RPM	2000	4000	6000	2000	4000	6000	2000	4000
Continuous stall torque	N.m	0.19	0.19	0.19	0.384	0.384	0.384	0.54	0.54
Rated torque	N.m	0.16	0.16	0.16	0.32	0.32	0.32	0.45	0.45
Rotor power	W	33.5	67	100.5	67	134	201	94	188
Peak torque	N.m	0.48	0.48	0.48	0.93	0.96	0.96	1.35	1.35
Peak current	A	5.58	11.1	13.7	11.1	22.2	33.3	15.6	31.2
Torque constant	Nm/A	0.081	0.042	0.028	0.081	0.045	0.028	0.081	0.045
Back E.M.F	V/KRPM	8.57	4.8	3	8.57	4.8	3	8.57	4.8
Rotor inertia	g.c.m <sup>2</sup>	60.5	60.5	60.5	113	113	113	165	165
Body length	mm	54	54	54	74	74	74	94	94
Voltage range	VDC	12~60			24~60			24~160	
Speed Range	rpm	2000~6000							
Weight	Kg	0.5	0.5	0.5	0.75	0.75	0.75	1	1

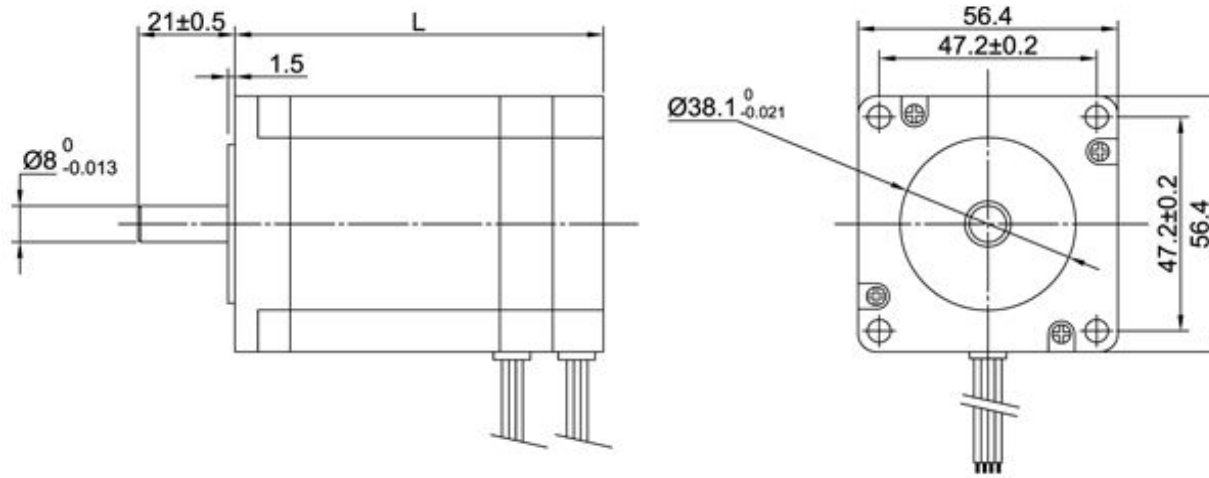
**General specification:**

Item	Specifications
Winding type	Delta
Hall effect angle	120 degree electrical angle
Shaft run out	0.025mm
Radial play	0.025mm@460g
End play	0.025mm@400g
Max. radial force	75N @ 20mm from the flange
Max. axial force	15N
Insulation class	Class B
Dielectric strength	500VDC for one minute
Insulation resistance	100MΩMin., 500VDC

Project No.:	Part No.:	Material	REV
	EL57RBL DC		A
Description:		Weight	Scale
DC Brushless Motor		Design:	
<b>ELMEQ</b> <a href="http://www.elmeq.com">www.elmeq.com</a>		Approve:	

 Tish drawing and its contents are the property of ELMEQ and must not be copied, reproduced, transmitted or disclosed to any third party without written consent of ELMEQ.

Rev	Modify details	Modified by/date




Specification:

Model		EL57SBL 59-01	EL57SBL 59-02	EL57SBL 80-01	EL57SBL 80-02	EL57SBL 101-01	EL57SBL 101-02
Number of poles		8					
Number of phase		3					
Rated voltage	VDC	24	24	24	24	24	24
Rated speed	RPM	1000	3000	1000	3000	1000	3000
Continuous stall torque	N.m	0.24	0.24	0.48	0.48	0.72	0.72
Rated torque	N.m	0.2	0.2	0.4	0.4	0.6	0.6
Rotor power	W	21	63	42	125	62	188
Peak torque	N.m	0.6	0.6	1.2	1.2	1.8	1.8
Peak current	A	3.28	9.84	3.28	9.84	3.28	9.84
Torque constant	Nm/A	0.227	0.058	0.227	0.058	0.227	0.058
Back E.M.F	V/KRPM	24	6.1	24	6.1	24	6.1
Rotor inertia	g.cm <sup>2</sup>	145	145	286	286	420	420
Body length	mm	59	59	80	80	101	101
Voltage range	VDC	12~60		12~80		24~120	
Speed Range	rpm	1000~3000					
Weight	Kg	0.6	0.6	1	1	1.5	1.5

General specification:

Item	Specifications
Winding type	Star
Hall effect angle	120 degree electrical angle
Shaft run out	0.05mm
Radial play	0.025mm@400g
End play	0.025mm@400g
Max. radial force	15N @ 10mm from the flange
Max. axial force	10N
Insulation class	Class B
Dielectric strength	500VDC for one minute
Insulation resistance	100MΩMin., 500VDC

Project No.:	Part No.:	Material	REV
	EL57SBL DC		A
Description:		Weight	Scale
DC Brushless Motor		Design:	
 <a href="http://www.elmeq.com">www.elmeq.com</a>		Approve:	



Tish drawing and its contents are the property of ELMEQ and must not be copied, reproduced, transmitted or disclosed to any third party without written consent of ELME