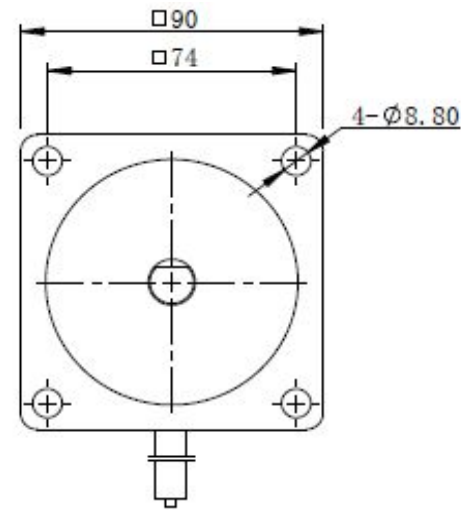
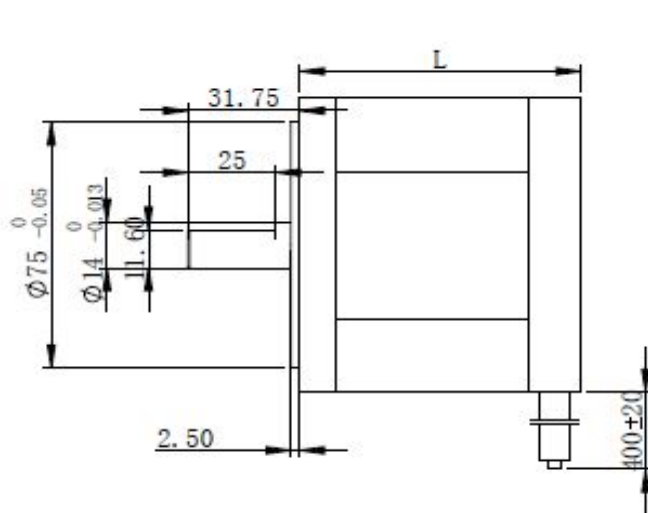


Rev	Modify details	Modified by/date




Specification:

Model		EL90SBL 77	EL90SBL 107	EL90SBL 137
Number of phase		3		
Rated voltage	VDC	48	48	48
Rated speed	RPM	3200	3200	3200
Rated torque	mN.m	600	1200	1800
Peak torque	mN.m	1800	3600	5400
Back E.M.F	V/KRPM	11.8	12.6	12.6
Rotor power	W	200	400	600
Body length	mm	77	107	137
Weight	Kg	2.1	3.3	4.5

General specification:

Item	Specifications
Winding type	Star/Delta
Hall effect angle	120 degree electrical angle
Shaft run out	0.05mm
Radial play	0.06mm@450g
End play	0.08mm@450g
Max. radial force	220N@20mm from the flange
Max. axial force	60N
Insulation class	Class B
Dielectric strength	500VAC for one minute
Insulation resistance	100MΩMin.500VDC

Project No.:	Part No.:	Material	REV
	EL90SBL DC		A
Description:		Weight	Scale
DC Brushless Motor		Design:	
 www.elmeq.com		Approve:	



This drawing and its contents are the property of ELMEQ and must not be copied, reproduced, transmitted or disclosed to any third party without written consent of ELME