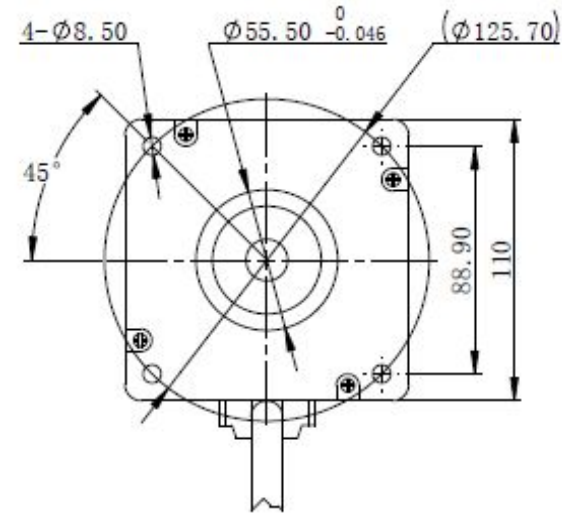
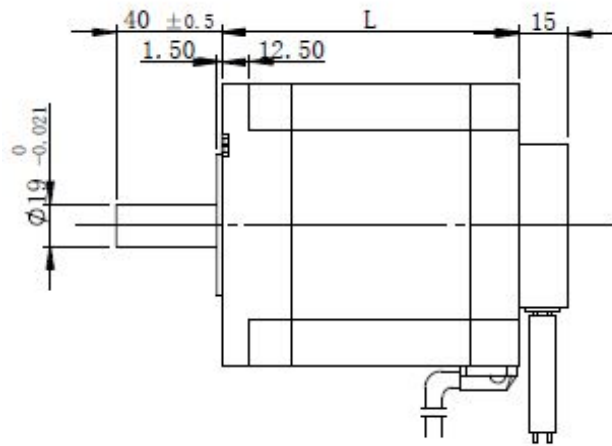


Rev	Modify details	Modified by/date




Specification:

Model		EL110SBL 113-01	EL110SBL 113-02	EL110SBL 113-03	EL110SBL 173-01	EL110SBL 173-02
Number of poles		8				
Number of phase		3				
Rated voltage	VDC	48	170	310	170	325
Rated speed	RPM	2500	1000	3000	1000	2500
Continuous stall torque	N.m	3.6	3.6	3.6	7.2	7.2
Rated torque	N.m	3	3	3	6	6
Rotor power	W	750	314	942	628	1570
Peak torque	N.m	9	9	9	18	18
Peak current	A	59	7.5	11.4	14	18.2
Torque constant	Nm/A	0.14	1.18	0.76	1.18	0.76
Back E.M.F	V/KRPM	15	125	80.5	125	80.5
Rotor inertia	g.cm ²	3	3	3	6	6
Body length	mm	113	113	113	173	173
Voltage range	VDC	24~325	48~325			
Speed Range	rpm	1000~3000				
Weight	Kg	5.6	5.6	5.6	9.2	9.2

General specification:

Item	Specifications
Winding type	Star
Hall effect angle	120 degree electrical angle
Shaft run out	0.05mm
Radial play	0.02mm@460g
End play	0.08mm@450g
Max. radial force	220N @ 20mm from the
Max. axial force	60N
Insulation class	Class B
Dielectric strength	500VDC for one minute
Insulation resistance	100MΩMin., 500VDC

Project No.:	Part No.:	Material	REV
	EL110SBL DC		A
Description:		Weight	Scale
DC Brushless Motor			
		Design:	
 www.elmeq.com		Approve:	



This drawing and its contents are the property of ELMEQ and must not be copied, reproduced, transmitted or disclosed to any third party without written consent of ELMEQ