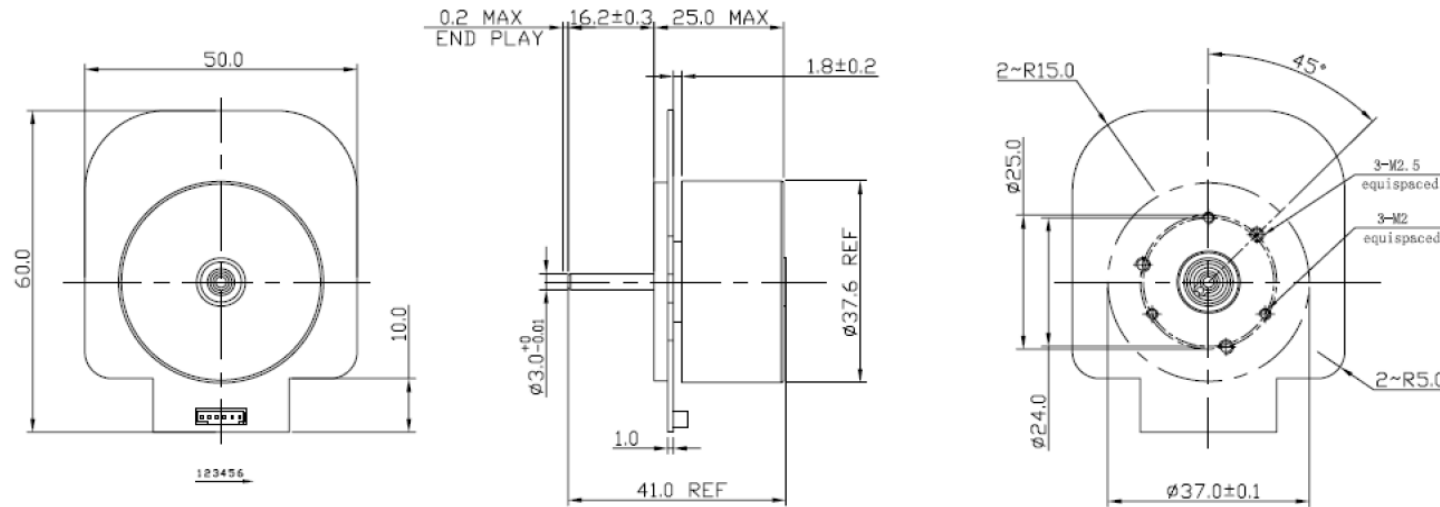


Rev	Modify details	Modified by/date



Model	Voltage(V)		No Load		Rated Load			Starting		
	Operating Range	Rated	Speed (rpm)	Current (A)	Torque (mNm)	Speed (rpm)	Current (A)	Output P. (W)	Torque (mNm)	Current (A)
EL37REBL25C-011E	8-26	24	3500	0.18	29.18	2700	0.61	8.27	128.7	2.10
EL37REBL25C-021E	8-26	16	4850	0.20	29.14	4100	1.10	12.53	190.08	6.10

Lead wire define	
1.Red	Motor"+"
2.Green	Speed signal output.
3.Yellow	CW/CCW control, No connect motor ruing CW.connect motor"- " running CCW.
4.Black	Motor"- "
5.Blue	PWM speed control, If PWM wire connect motor" - " motor running in full speed.
6.White	Brake: Input voltage range:0 V~5 V;High voltage,brake does not work(2.0 V Min or not connect);Low voltage,the motor is braked(0.8 V Max:)

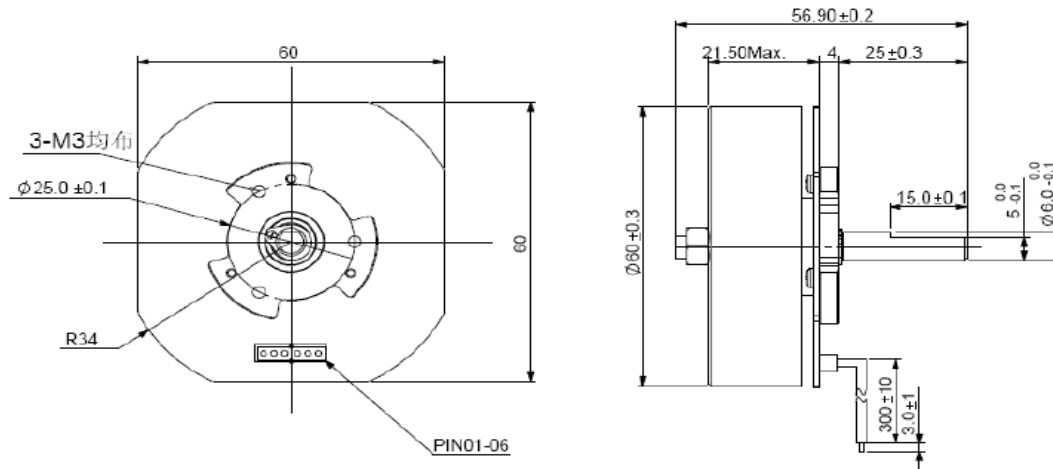
Notice:
The datas in this typical specification sheet are for other certain customers, the specific BLDC motor performance can be changed by adjusting winding, magnetic field, controller parameter and relevant mechanical factor to meet different customer requirement.

Project No.:	Part No.:	Material	REV
	EL37REBL25C		A
Description:		Weight	Scale
DC Brushless Motor			
		Design:	
		Approve:	
ELMEQ www.elmeq.com			



This drawing and its contents are the property of ELMEQ and must not be copied, reproduced, transmitted or disclosed to any third party without written consent of ELMEQ.

Rev	Modify details	Modified by/date



Model	Voltage(V)		No Load		Rated Load				Starting	
	Operating Range	Rated	Speed (rpm)	Current (A)	Torque (mNm)	Speed (rpm)	Current (A)	Output P. (W)	Torque (mNm)	Current (A)
EL60REBL20-01IE	85-265 ac	220 ac	2300	0.13	294	1370	0.57	42.3	730	1.22
EL60REBL20-02IE	8-26	24	1940	0.41	158	1760	1.58	29.2	1022	8.00
EL60REBL20-03IE	8-26	24	2200	0.32	85	1230	0.80	11.0	220	1.50

Lead wire define	
1.Red	Motor"+"
2.Green	Speed signal output.
3.Yellow	CW/CCW control, No connect motor runing CW.connect motor"-." running CCW.
4.Black	Motor"-"
5.Blue	PWM speed control, If PWM wire connect motor"-." motor running in full speed.
6.White	Brake: Input voltage range:0 V~5 V;High voltage,brake does not work(2.0 V Min or not connect);Low voltage,the motor is braked(0.8 V Max:)

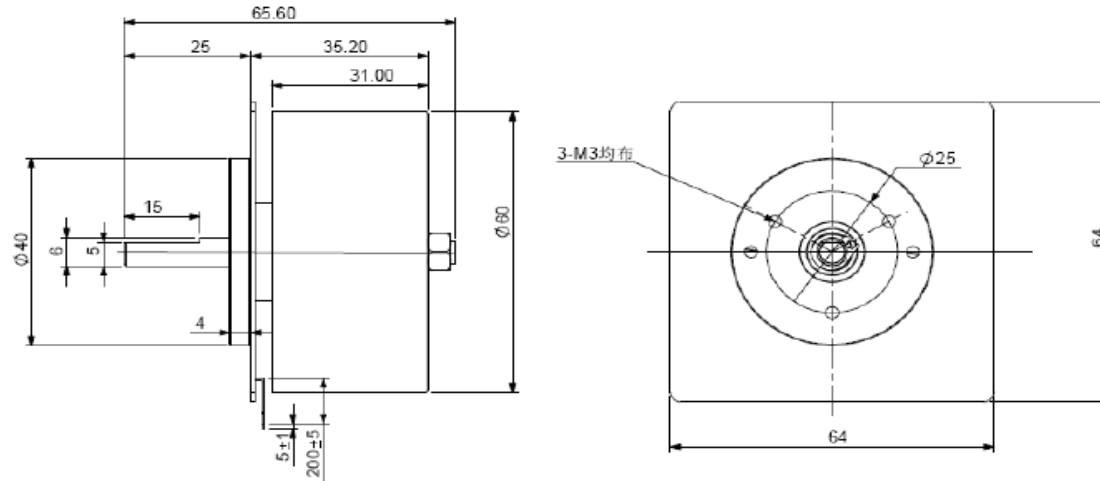
Notice:
The datas in this typical specification sheet are for other certain customers, the specific BLDC motor performance can be changed by adjusting winding, magnetic field, controller parameter and relevant mechanical factor to meet different customer requirement.

Project No.:	Part No.:	Material	REV
	EL60REBL20		A
Description:		Weight	Scale
DC Brushless Motor			
		Design:	
ELMEQ www.elmeq.com		Approve:	



This drawing and its contents are the property of ELMEQ and must not be copied, reproduced, transmitted or disclosed to any third party without written consent of ELMEQ.

Rev	Modify details	Modified by/date

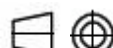


Model	Voltage(V)		No Load		Rated Load			Starting		
	Operating Range	Rated	Speed (rpm)	Current (A)	Torque (mNm)	Speed (rpm)	Current (A)	Output P. (W)	Torque (mNm)	Current (A)
EL60REBL30-011E	85-265ac	220ac	2300	0.13	294	1370	0.57	42.3	730	1.22
EL60REBL30-021E	8-26	24	1940	0.41	158	1760	1.58	29.2	1022	8.00
EL60REBL30-031E	8-26	24	2200	0.32	85	1230	0.80	11.0	220	1.50

Lead wire define	
1.Red	Motor"+"
2.Green	Speed signal output.
3.Yellow	CW/CCW control, No connect motor runing CW.connect motor"- " running CCW.
4.Black	Motor"-"
5.Blue	PWM speed control, If PWM wire connect motor"- " motor running in full speed.
6.White	Brake: Input voltage range:0 V~5 V;High voltage,brake does not work(2.0 V Min or not connect);Low voltage,the motor is braked(0.8 V Max:)

Notice:
The datas in this typical specification sheet are for other certain customers, the specific BLDC motor performance can be changed by adjusting winding, magnetic field, controller parameter and relevant mechanical factor to meet different customer requirement.

Project No.:	Part No.:	Material	REV
	EL60REBL30		A
Description:		Weight	Scale
DC Brushless Motor			
		Design:	
		Approve:	
ELMEQ www.elmeq.com			

 This drawing and its contents are the property of ELMEQ and must not be copied, reproduced, transmitted or disclosed to any third party without written consent of ELMEQ.