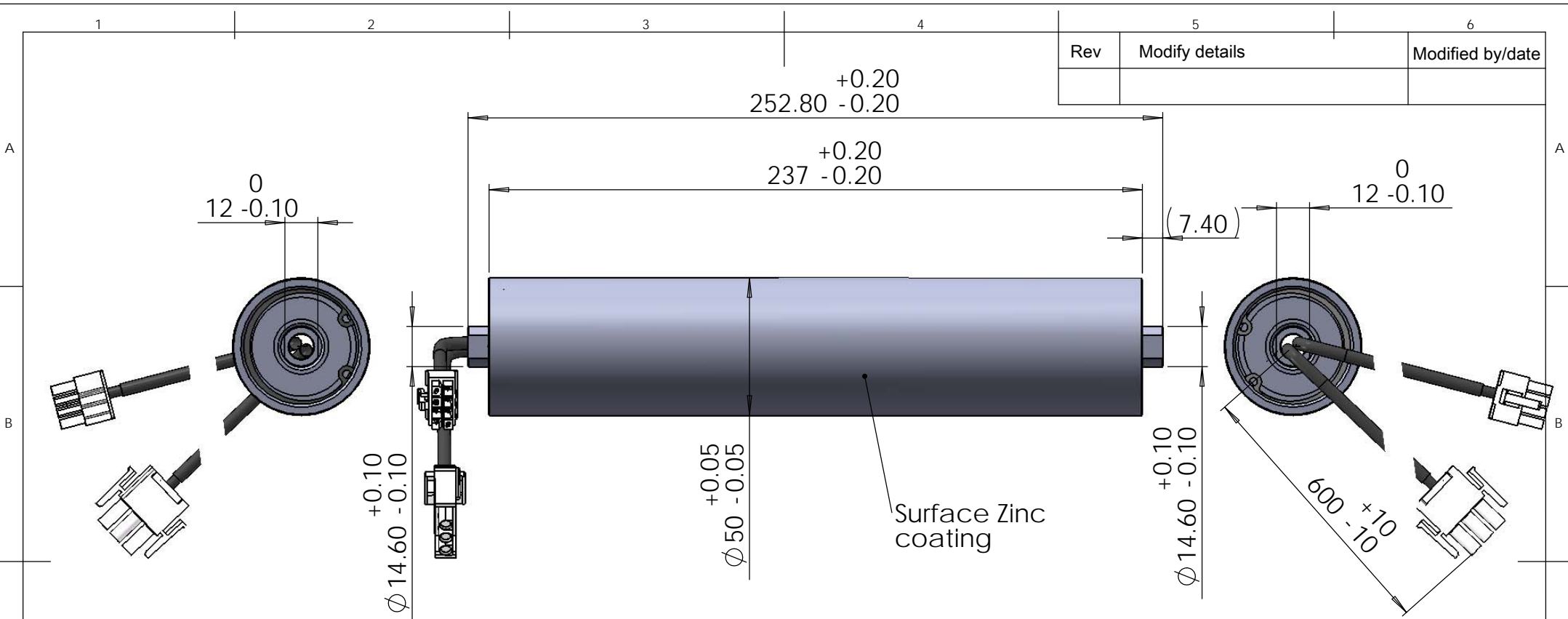
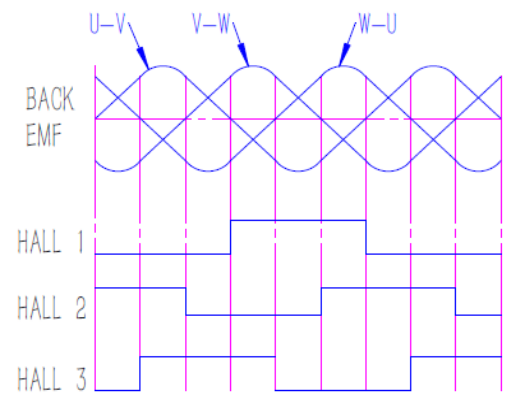


Rev	Modify details	Modified by/date

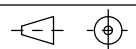


Motor winding conector		
Pin number	Colour	Function
Pin 1	Black	Phase U
Pin 2	Red	phase W
Pin 3	White	phase V
Hall sensor conector		
Pin number	Colour	Function
Pin 1	Blue	Hall 2
Pin 2		NC.
Pin 3		Shield
Pin 4		NC.
Pin 5	Red	Hall +5VDC
Pin 6	White	Hall 1
Pin 7	Green	Hall 3
Pin 8	Black	Hall GND



Rated voltage	[VDC]	75
No load speed	[RPM]	2265
Rated speed	[RPM]	764
Rated torque	[Nm]	4.1
Torque constant	[Nm/A]	0.35
Line to line Back-EMF	[Vrms/krpm]	23.5
Line to line resistance	[Ohm]	2.04
Line to line Inducance	[mH]	2.3
Duty cycle		1.5s ON,10s OFF

Project No. : XXXXX	Part No. : EL50BLR237-xxxxx	Material	REV A
Description: Tubular outer rotor BLDC motor		Weight	Scale 1:2
ELMEQ www.elmeq.com		Design: Tim 2015/05/24	
		Approve:	



This drawing and its contents are the property of ELMEQ A/S and must not be copied, reproduced, transmitted or disclosed to any third party without written consent of ELMEQ A/S